

The Poorthuis

The former main entrance of this magnificent domain was at this building, particular in proportion and volume.

It is trapezoidal, with the narrowest side against the entrance, it has a magnificent bread oven that unfortunately is partly broken. But it gives us a unique opportunity to create a fireplace with what remains.



A baker's oven is particularly beautiful from the inside, where all refractory bricks are stacked in concentric rows which make it highly decorative. As you can see on the plans this is the perfect spot for a fireplace.

This house has a large terrace with a magnificent view. It indeed is a really nice house with some authentic elements that contributed to the prosperity of this domain.

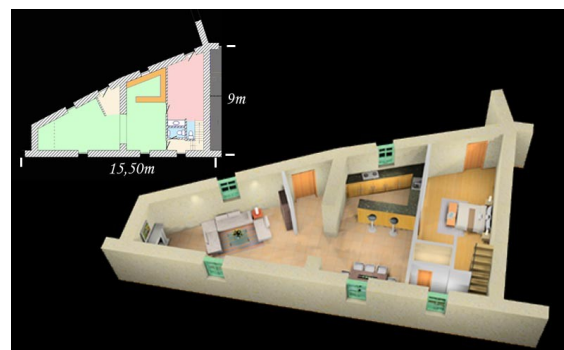
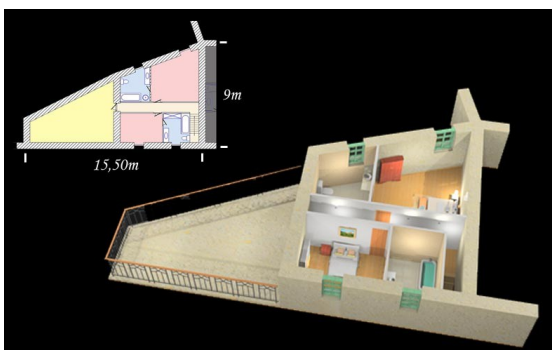
To the north there is a strip of land of 4.3 m wide and the entire length, wide enough to sit outside for the fresh air.



Not everybody likes a garden or a lot of land. This is something for those who prefer to look at the garden of the neighbours than to make its own and look after it. Not everyone has green fingers, do they?

Besides the three bedrooms and three bathrooms, the "Poorthuis" consists of a large dining room, a very cosy living room with this famous fireplace.

There is room on the terrace for a hot tub. Which is an optional extra. A barbecue on the terrace and a few large car spaces are also included in the price.



€144,450 (without renovation) / €308,000 renovation included